

GAS BALL VALVE

FAF4100

4100



Features

- It has brass material, which is made of copper and zinc composite. It is manufactured by die forcing in moulds and by precision machining on CNC machines.
- FAF branded brass valves made of MS58 quality brass. It has high durability and impact resistance at low temperature. It can be used at water installations.
- The valves are suitable for line assembly in pipeline, the principal aim is to open and close flow in distribution systems.
- Recommended for open/close applications.
- It can be manufactured as FAF4110 Locked ball valve, which provides (Open-Close) locking option
- Leakproof stem.
- Stock piled for quick delivery.

Temperature

- -10, +110 °C

PRODUCTS MODEL CODES

FAF4100	GAS BALL VALVE
FAF4110	GAS BALL VALVE with locking option
FAF4000	BALL VALVE
FAF4200	BRASS SPRING CHECK VALVE
FAF4300	BRASS SWING CHECK VALVE
FAF4350	BRASS SWING CHECK VALVE

PRODUCTION STANDARDS

DN15 → DN100
PN 16-25

Design	EN 331
Connection	Threaded EN ISO 228-1
Face to Face	EN 331
Marking	EN 331
Tests	EN 331

Product Description

FAF4100 Brass Ball Valve for gas applications works parallel or vertical position to flow axis by rotating quarter tour (90 degrees) between teflon seats via a ball which is big as flow section through control shaft.

Scope of Application

- Gas
- Pressurized air
- LPG
- Steam
- Heating & cooling
- Housing & industrial applications
- Compressed air installations
- Various gases (excluding flammable gases)

VALVE TEST PRESSURE (Bar)

MAX. OPERATING PRESSURE	BODY / SHELL TEST	SEAT TEST
16	24	17,6
25	37,5	27,5

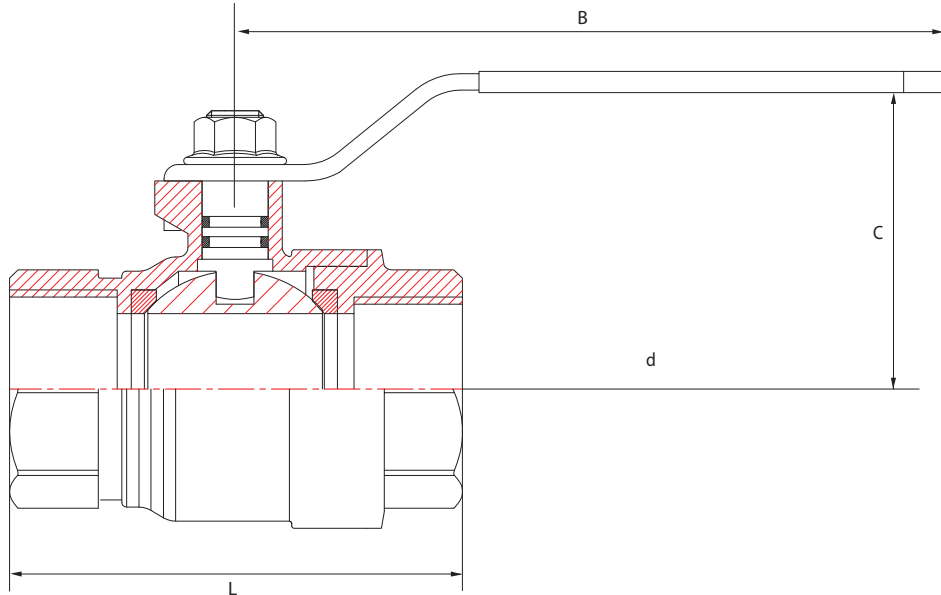
100% of the valves are subjected to hydrostatic tests at FAF facilities.



GAS BALL VALVE

FAF4100

Technical Details & Drawing, Dimensions



MATERIAL SELECTION

Body	CuZn40Pb2 -Nickel Plated
Bonnet	CuZn40Pb2 - Nickel Plated
Lever	ST37 Steel + PVC Coated
Stem	CuZn39Pb3
Ball	CuZn40Pb2 - Chrome Plated
Seals	PTFE - Teflon
O-Ring	NBR
Nut	Galvanized Coated Steel

Pipe Thread	Nominal Dimension	d(mm)	L(mm)	B(mm)	C(mm)
1/2"	15	14	50	85	43
3/4"	20	17	57	85	47
1"	25	24	71	97	47
1 1/4"	32	30	75	111	60
1 1/2"	40	38	87	153	77
2"	50	50	105	153	85